



### Dragonfly larvae

Damselflies with 3 caudal leaf gills, elongated body, slender. Length 10-26 mm (without caudals). Color mostly gray or yellow-brown.



Large dragonfly larvae have no caudal leaf gills, oval body. Larger than damselflies 10-50 mm. Wear a catcher mask to grab prey.



### Stonefly larvae

length up to 10-30 mm (mass without tail filaments), always only 2 tail filaments no gills on the abdomen



Compare with: Mayfly larvae with 3 tail filaments, with gills on the abdomen.



Compare with: Dragonfly larvae, always with 3 caudals, without gills on the sides of the abdomen.



### Caddisfly larvae

(with protective case)

The larvae live in a self-made caddis made of sand, small stones or plant matter.



Exceptions without caddis: but all 3 breast segments strengthened (chitinized)



only 1 breast segment chitinized



### Mayfly larvae

With 3 hairy or hairless caudal filaments (one exception with central filament absent); abdomen covered with leaf-like, filamentous, or tree-like gills



Compare with: Stonefly larvae, always with 2 tail filaments, without gills on the abdomen.



Compare with: Dragonfly larvae, always with 3 caudals, without gills on the sides of the abdomen.



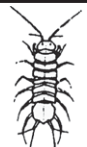
### Amphipod



length 15-20 mm, laterally flattened body, moves sideways forwards on the substrate, 2 pairs of long antennae on the head, remaining body parts with a total of 13 pairs of legs



Compare with: Waterlouse (E)

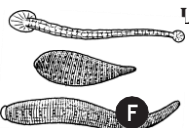


### Waterlouse

Length 8-12 mm, 1 pair of long, 1 pair of short antennae on head, remaining body parts with 7 pairs of legs

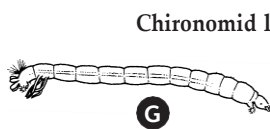


Compare with: Amphipod (D)



### Leeches

Length 5-40 mm (-100 mm for the leech Piscicola geometra), worm-like animals with suckers at the ends of the body, move by alternately sucking and releasing the suckers. Sometimes they roll up when being disturbed or swim with their bodies stretched out.



### Chironomid larva

Length up to 20 mm color light to dark red, caterpillar-like animals with small head followed by 12 segments (ringlets) with 1 pair of foot stubs at each end of the body, live in the upper mud layer at the bottom of heavily polluted watercourses, move in open water by twitching body movements



### Rat-tailed maggot

length up to 20 mm and with breathing tube 35 mm fat, white-grey larvae with 7 pairs of ganglion warts (similar to caterpillar spots on the underside) 3-part, retractable breathing tube

### Other small vertebrates

Planarian



Blackfly larva



net-winged midge larva



Tubifex/ Worms



Mudfly larva



Caterpillar



Waterbeetle larva



